


<p>Committee Meeting Minutes</p> <p>Meeting # 4 2 May 2024</p>	<p>Kiewa Catchment Landcare Groups Inc</p> <p>https://kclg.org.au/ https://www.facebook.com/groups/kiewalandcare</p>	
--	--	---

4

Kiewa Catchment Landcare Group		KCLG INC Special General Meeting	Special General Meeting 20/06/2024 
ZOOM Link:		Venue:	https://meet.google.com/ijw-ctzp-xtr
Purpose:	Special General Meeting	Scheduled Time:	7.00 pm

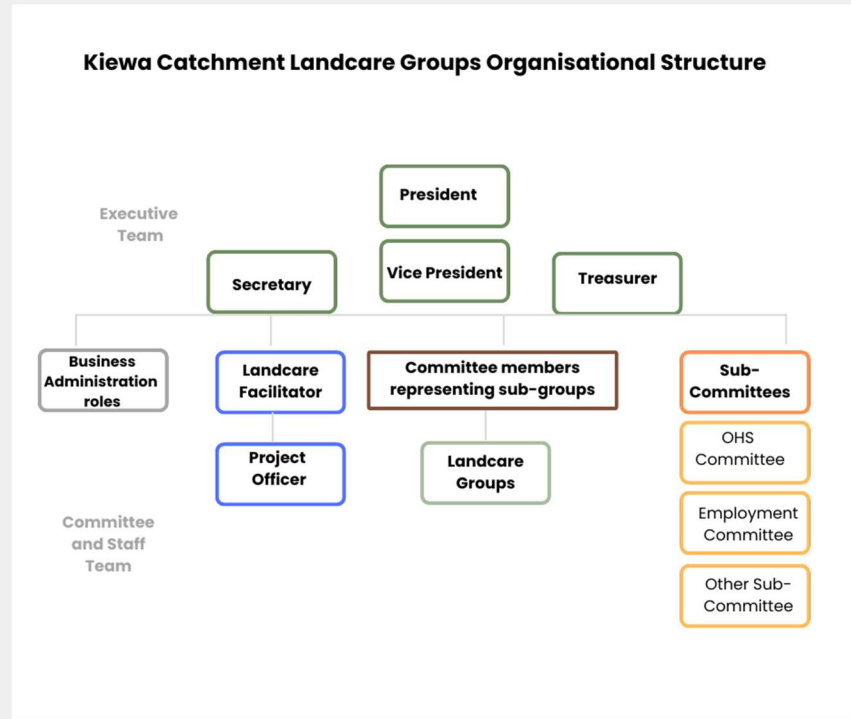
Attendees: KCLG EXEC TEAM		KCLG EXEC TEAM	Initials:	Attendees:Committee	Landcare Group	Initials
Rowan Wallace	Kergunyah	President KCLG.	RW	Pam Davis Jones	Kiewa Tangam Bonegilla	PDJ
Peter Presutti	Baranduda	Treasurer- KCLG	PP	John Gibbons	Upper Kiewa	JG
Sue Mahon	Kergunyah	Secretary-KCLG	SM	Cathy Gunn	Upper Kiewa	CG
Tony Marsh	Baranduda	Admin	T.M	Robyn McMullen	Gundowring	RM

				Rob Sazabo - Not in attendance	3 Flats Group	RS
KCLG Staff				Claire Purcell - Not in attendance	3 Flats Group	CP
Shannon Brennan		KCLG Landcare Facilitator	SB	Glen Johnson - Not in attendance	Baranduda	GJ
Chontelle Bourne		KCLG Project Officer	CB			
Convener:		President KCLG Rowan Wallace	RW	Minutes: Sue Mahon	KCLG Secretary	SM

Circulation: To all Persons above

1.1 Apologies				Belinda Pearce Bridget Doyle Claire Purcell			
1.2 Online Members Attending				Cheryl Frawley Patricia Hendricks			
1.2 Acknowledgement of Country				Rowan Wallace Acknowledgement of country I would like to acknowledge the traditional owners of the lands on which we meet today. And pay our respects to the elders past, present and emerging. I would also like to acknowledge the contribution made by aboriginal groups to Landcare.			
Changes/amendments to the KCLG Inc Constitution Current Constitution link				Model rules for an Incorporated Association Under CONSUMER AFFAIRS VICTORIA Associations Incorporation Reform Act 2012 Associations Incorporation Reform Regulations 2023 Add Incorporated Inc to all references of KCLG Inc			

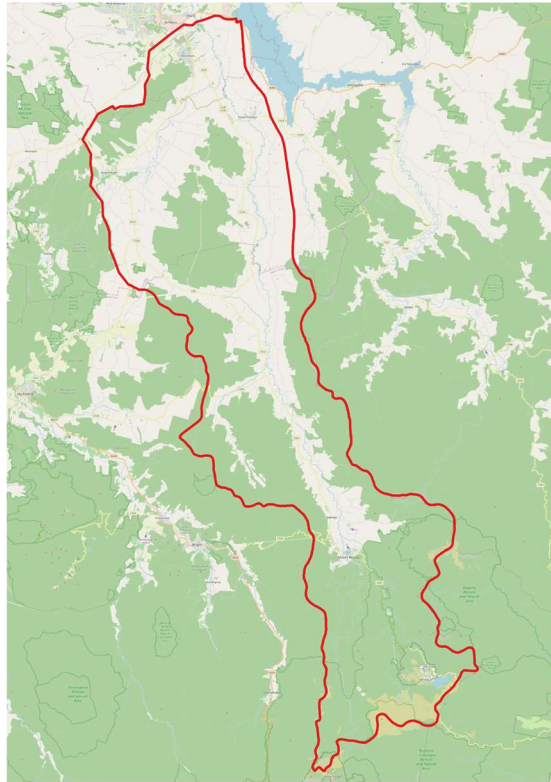
Executive Committee - includes the President, Vice President, Secretary, Treasurer as defined in these rules



Add KCLG Organisation chart as a schedule

Section 2.1 - Description of Network

The Kiewa Catchment Landcare Groups Inc (KCLG), network was formed in 1999 to deliver and manage Landcare across the Kiewa River Catchment (refer to Schedule 3 - Map of KCLG boundaries). The KCLG sits within the Shires of Indigo, Alpine and the City of Wodonga.



Kiewa Catchment Landcare Groups Boundary

Add Map of KCLG boundary as Schedule

12 ADMINISTRATIVE SUPPORT

- 12.1 The KCLG may employ staff to carry out the administration and affairs of the KCLG.
- 12.2 The selection of persons employed by the KCLG shall be a function of the Employment Steering Sub Committee.
- 12.3 KCLG may use the services of a Committee member to voluntarily carry out administration affairs.

			<p>Section 14.5 - The ordinary business of the AGM shall be:-</p> <ul style="list-style-type: none"> a) to confirm the minutes of the last preceding AGM and any other Special General Meeting held since the previous AGM b) to receive from the Committee reports upon the transactions of KCLG during the last preceding financial year c) to elect members to the KCLG Committee, d) to receive and consider the financial statements of KCLG for the preceding financial year submitted by the Committee in accordance with Part 7 of the Act. 			
			<p>Section 15 - Special General Meeting</p> <p>15.1 - A Special General Meeting must have a specific purpose. At a Special General Meeting members may consider a range of matters, including those that must be decided by a special resolution.</p> <p>15.2 - The Secretary of the Committee of KCLG will call a Special General Meeting on the request of at least 4 member groups of KCLG or at any time by request of the Executive Committee.</p> <p>15.3 – Twenty-one (21) days notice will be given of a Special General Meeting to all financial members.</p> <p>15.4 All financial members who attend a Special General Meeting have a voting right.</p>			
			<p>Section 15.1 - Committee membership shall consist of</p> <ul style="list-style-type: none"> a) President (refer Section 20) b) Vice President (refer Section 21) c) Secretary (refer Section 22) d) Treasurer (refer Section 23) e) Committee members - 2 per Landcare group (excluding Executive positions) 			
			<p>16.5 Every financial member of the Committee has a voting right</p>			

			<p>section 17 - Sub-Committees of the Committee</p> <p>17.4 The Employment Steering Committee will be responsible for managing human resources. The Employment Steering Committee shall be comprised of members of the Executive Committee and any other members as appointed by the Executive Committee.</p>			
			<p>Section 18 - ELECTION OF OFFICERS AND VACANCY</p> <p>18.1 - Nominations of candidates for election as officers of KCLG or as ordinary members of the KCLG Committee:</p> <ul style="list-style-type: none"> a) shall be made in writing, signed by any two Members of KCLG and accompanied by the written consent of the candidate (which may be endorsed on the form of the nomination);and b) shall be delivered to the “Returning Officer” of KCLG not less than 7 days before the date fixed for the holding of the annual general meeting c) a designated person will act as Returning Officer. d) Each Landcare Group can have two members on the Committee. e) All financial members have a voting right. 			
			<p>Section 22.4 - Notwithstanding sub-clause 23.1 the Committee may appoint a competent person or organisation to perform the duties of the Treasurer on behalf of KCLG. The Treasurer however shall always be responsible for submitting the statement of accounts to the Annual General Meeting in accordance with Part 7 of the Act.</p>			
			<p>Section 27.2 - The KCLG will prepare and retain accurate minutes of the Special General Meetings of the KCLG and meetings of the sub-committees as per the Act’s rules Section 50.</p>			

		<p>Section 28 – Winding up for Cancellation</p> <p>28.1 KCLG Inc may be wound up voluntarily by special resolution. Individual member groups would retain legacy accumulated funds held on their behalf by KCLG, subject to Incorporation.</p> <p>28.2 In the event of the winding up or the cancellation of the incorporation of KCLG, the surplus assets of the Association must not be distributed to any members or former members of KCLG.</p> <p>28.3 Subject to the Act and any court order made under section 133 of the Act, the surplus assets must be given to a body/bodies that has similar purposes to KCLG and is not operating for the profit or gain of its individual members.</p> <p>28.4 The body/bodies to which the surplus assets are to be given must be decided by a special resolution.</p> <p>Section 29 Direct Gift Recipient (DGR) revocation</p> <p>29.1 If the organisation is wound up, or its endorsement as a deductible gift recipient is revoked (whichever occurs first), any surplus of the following assets shall be transferred to another organisation with similar objectives, which is charitable at law, to which income tax deductible gifts can be made:</p> <ul style="list-style-type: none"> a) gifts of money or property for the principal purpose of the organisation b) contributions made in relation to an eligible fundraising event held for the principal purpose of the organisation c) money received by the organisation because of such gifts and contributions. 	
<p>Motion</p>		<p>That the Constitution of Kiewa Catchment Landcare Group Incorporated dated 20 June 2024 be adopted with effect from 21 June 2024.</p> <p>Motion has been accepted unanimously by all in attendance plus 2 proxy votes</p>	<p>Moved - RW, Second - JG.</p> <p>12 in favour, plus 2 proxy votes</p>

		LINK	2 Proxy votes received			
			Comments Discussion - no comments			

Scheduled Dates:	Meeting Closed