



# Kiewa Catchment Landcare Groups Inc

September 2022 Newsletter



## Keeping you up to date with your local Landcare news

*KCLG incorporates independent Baranduda and Yackandandah Creek as well as fully-merged Kiewa-Bonegilla, Kergunyah, Gundowring, Dederang Primary School & Upper Kiewa Landcare Groups. KCLG has a volunteer committee of representatives from our Landcare groups and funded Landcare Facilitator and Project Officer positions.*

**Hello Landcarers,**

Welcome to the September edition of the KCLG eNews. Its another bumper month in the Landcare space, so I hope there is something coming up to interest everyone. We also have our AGM coming up on the 6th October with special guest speaker Karen Retra so hope to see you there!

Shannon Brennan  
Landcare Facilitator KCLG

## What's in this issue:

- What's been happening
- What's coming up in our region
- Grants available and surveys
- Resources
- Contact us

## What's been happening

**New planting completed along the Kiewa River Trail, Mount Beauty**

Two new areas have been planted along the Kiewa River Trail in Mount Beauty by Upper Kiewa Landcare, students from Mount Beauty Secondary College and community members.

The first event was held on the 3rd September and resulted in 350 plants being planted in a new area prepared by Alpine Shire. The day was organised by the Mt Beauty Secondary College year 9 Student Leadership Team with the support of Upper Kiewa Landcare. The six leadership students attended the School for Student Leadership in Marlo during Term 2. As part of this experience, they were required to plan and complete a community learning project. The team chose to create a community tree planting day to help make their local community greener and create an impact against climate change. The day was a huge success, the weather was brilliant, and all the trees were planted ahead of schedule. Well done to Annika, Zoe, Daisy, Natalie, Aidan and Will!

Members of Upper Kiewa Landcare planted a further 120 trees on the 10th September in a different area on the Kiewa River Trail. The group are now waiting for flooding to subside so they can plant the remaining trees. This year's plantings together with last year's plantings will create a bird and wildlife corridor and refuge along the West Kiewa River and it's great to see that some of last year's plants are now approaching 3 metres tall!

Upper Kiewa Landcare would like to thank Alpine Shire, 15-trees and GJ Gardiner Homes (for the supply of the trees) and Mount Beauty Secondary College for making this possible.



*Students and community members at the planting day on the 3rd September.*

If you would like to get involved in future planting events please contact John Gibbons on **0407 520 542** or email at [warrawongnatives@bigpond.com](mailto:warrawongnatives@bigpond.com).

## **Kiewa Carbon Bash - Wrap up workshop**

On the 1st September we held our wrap up workshop on the Kiewa Carbon bash. There was lots of great information shared about carbon levels throughout the Kiewa Valley through our carbon blitz project so watch this newsletter, our website and Facebook site for all the data and videos that will be shared over the coming months.

Also a big thanks to David Hardwick of [Soil Land Food](#) for being the mentor for our project, our demo farmers who have participated in this project, our loyal Landcare locals who have attended numerous

workshops, Jan of [Waddingtons at Kergunyah](#) from her great catering, and also the federal government for funding our project through the Future Drought Fund program. We are hoping to continue the momentum built through this project over the coming year through other soil carbon projects so watch this space for more information.



### **Dederang Gap Road Reserve Planting Day**

KCLG recently partnered with Dederang Primary School and NEMA (North-East Maintenance Alliance) Roads to complete a new planting at the Dederang Gap reserve. Three areas were planted including some native grasses near picnic tables, and trees and shrubs in sites adjacent to the road. The day was excellent with the children getting 300 plants in the ground in 2 hours.

Thanks to Adrian Fiske from NEMA Roads and Monika King, Principal at Dederang Primary School for working with us to make this all happen.

Landcare are planning to run future working bees to maintain the planted sites and to continue to improve amenity of the area. If you are interested in becoming part of these working bees please contact [facilitator@kclg.org.au](mailto:facilitator@kclg.org.au).



*Students from Dederang Primary school planting at Dederang Gap reserve*

## What's coming up in our region

### **KCLG Annual General Meeting with Special Guest Speaker Karen Retra, 6th October 5.30 - 7.30pm**

KCLG will be celebrating our year and holding our annual general meeting at the Yackandandah Courthouse on the 6th October 5.30 - 7.30pm. It will commence with a light dinner at 5.30pm, followed by AGM nominations and closed out by a great presentation from Karen Retra on pollinator insects.

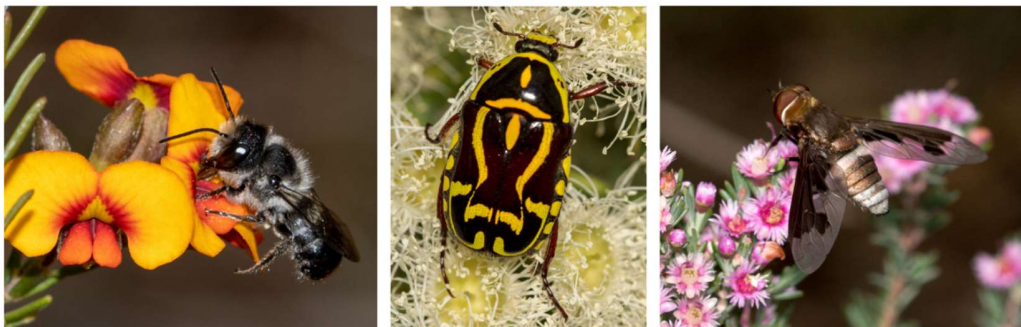
To nominate for a role on the KCLG Committee please [click here](#).

To register for this exciting event and catering purposes please [click here](#).



# Kiewa Catchment Landcare Groups Inc Celebration Dinner, AGM & Pollinator Presentation

**Thursday October 6th - Yackandandah Courthouse  
5.30 - 7.30pm : All Welcome**



**Kiewa Catchment Landcare Groups** are excited to welcome and invite you all to celebrate the year to date with a light dinner at the Yackandandah Courthouse. This will be followed by our Annual General Meeting to elect our committee for the coming 12 months. We will also have a special presentation by local neighbourhood naturalist **Karen Retra**

**Getting to know local pollinator insects** - What do you know about native bees? Ever wondered about wasps? Or perhaps butterflies, moths, beetles or even flies could take your fancy? Insects are often overlooked or assumed to be pests, yet they play a host of crucial roles in our landscapes, on farms and in our gardens. Karen will highlight the diversity of wild pollinator insects and what we can do to support them.

Light Dinner Celebration : 5.30-6pm

AGM : 6 - 6.45pm

Pollinators Presentation by Karen Retra - 6.45 - 7.30pm



*Please register via QR code, the KCLG eventbrite page  
or KCLG Facilitator Shannon Brennan at [facilitator@kclg.org.au](mailto:facilitator@kclg.org.au)  
or 0407 227 824 or Project Officer Charles Daaboul at  
[projects@kclg.org.au](mailto:projects@kclg.org.au) or on 0493 268 085*



## **A Guided walk of Bonegilla Grasslands, 8th October 10am - 12 pm**

Kiewa-Tangambalanga-Bonegilla Landcare are delighted to have Glen Johnson, Biodiversity Recovery Coordinator with Department of Environment, Land and Water lead us on a walk through the Bonegilla

Grasslands Reserve. This is a wonderful opportunity to learn more about the amazing wildflowers and grasses in our very own backyard!

Join us a for a light morning tea and morning walk. All welcome, bookings essential.

For catering purposes please email Charles at [projects@kclg.org.au](mailto:projects@kclg.org.au) or phone 0493 268 085 to register or follow the Eventbrite link on the KTB or KCLG Facebook sites which will be released next week.



Getting there: The Grasslands Reserve Is on the Murray Valley Highway – between Killara and the Bonegilla. Look out for the Landcare signs on the Murray Valley Highway.

This event is made possible through the support of the Victorian Government's "*Victorian Landcare Support Grants*" and the "*Indigo Shire Community Grants*".

### **Upper Kiewa Landcare - Weekly Saturday Working Bees**

Upper Kiewa Landcare in Mount Beauty holds working bees most Saturday mornings to undertake various activities such as weed control, planting, tracking clearing and maintenance of a number of Landcare sites around the town. If interested in joining these bees please contact John Gibbons on **0407 520 542** or email at [warrawongnatives@bigpond.com](mailto:warrawongnatives@bigpond.com) to obtain information on weekly site locations, times and activities being undertaken.

### **Yackandandah Landcare - Monthly Sunday Working Bees**

Yackandandah Landcare holds working bees the first Sunday of every month to undertake various activities such as weed control, planting, tracking clearing and maintenance of a number of Landcare sites around Yackandandah. The next working bee will be Sunday 4th September at 9.30am at the Sports Park wetland. If interested in joining these bees follow Yackandandah Landcare on Facebook or contact Michelle Croker on 0477417449 or Jo Millar [jmillar@csu.edu.au](mailto:jmillar@csu.edu.au).

## Kergunyah Landcare - Exploring our roadsides - Hellhole Creek

### Sixth walk - Saturday 1st October

The next walk along Hellhole Creek exploring the roadsides will be held Saturday the 1st October. This walk will build onto learnings from the past four walks and everyone is welcome to come along, even if you haven't been able to come to the previous walks.

Meeting time is 9.00am to 11.00am. Meet at 387 Hellhole Creek Rd. Kergunyah. All Welcome! "No need to book."



#### Exploring our Roadsides: Hellhole Creek Road Kergunyah

Kergunyah/Gundowring Landcare invites you to join us on the first Saturday of each month to discover and record our diverse roadside flora and fauna, both native and exotic. This is a family friendly event open to members and the broader community. We will compile a bird & plant list, providing an opportunity to share knowledge and build identification skills.

Meet at **387 Hellhole Creek Road** at **9.00am** on the **first Saturday of each month** (weather permitting). You are welcome to attend one or all walks.

<b>2<sup>nd</sup> April</b>	<b>7<sup>th</sup> May</b>	<b>4<sup>th</sup> June</b>	<b>2<sup>nd</sup> Jul</b>	<b>6<sup>th</sup> August</b>
<b>3<sup>rd</sup> Sept.</b>	<b>1<sup>st</sup> Oct</b>	<b>6<sup>th</sup> Nov.</b>	<b>3<sup>rd</sup> Dec</b>	

No need to book. ALL WELCOME!

Bring a hat, water, sunscreen, insect repellent, camera/notepad (optional) & wear covered footwear.

For further information contact Belinda:

Phone: 02 6027 5294 e-mail: [lesandbelinda@yahoo.com](mailto:lesandbelinda@yahoo.com)

## Road to Regenerative Agriculture Case Studies - Now available for viewing!

As part of our Road to Regenerative Agriculture project we completed six case studies with each of our demonstration farmers. To watch the three visual case studies click on the links below. Links to our written case studies will be made available in next month's newsletter.

Video Case Study 1 – [Mount Emu Farm](#)

Video Case Study 2 – [Kirby Flat Farm](#)

Video Case Study 3 – [Cloudwood Farm](#)





*Tom Courtice on our demonstration site farmers featuring in a case study video*

## **Would you like to access subsidised soil testing?**

### ***Expressions of interest are now open for the Australian Governments Pilot Soils Monitoring and Testing Program***

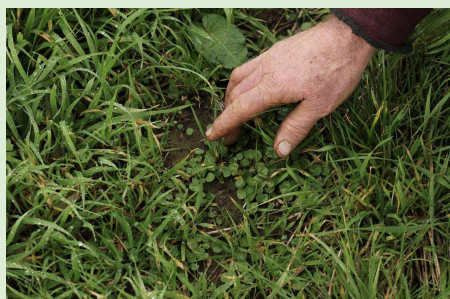
The Australian Government is providing \$54.4 million over two years to support farmers and land managers to access low-cost soil sampling and certified testing in exchange for sharing their data under the Pilot Soil Monitoring and Incentives Program.

Farmers and land managers may be eligible for benefits of up to \$10,000 and receive assistance from Commonwealth-funded soil extension officers to interpret their soil test results. Southern Cross University has been engaged to deliver the program, including arranging soil sampling and testing for land managers who have successfully applied for assistance.

For more information on the program, including for farmers and land managers wanting to register:

<https://www.scu.edu.au/pilot-soils-program/>

Additional information on the program including eligibility criteria is available in [Frequently Asked Questions](#).





## Catch up with the National Landcare Conference held in August 2022

The National Landcare Conference was held in Sydney last week.. If you were there but wanted to catch up with the presentations you missed OR you didn't get there in person, there's plenty of opportunity to listen to all the proceedings on-line here at [2022 National Landcare Conference Education Resources \(landcarer.com.au\)](https://landcarer.com.au).

Among the plenary sessions were:

Keynote Speaker: Prof. Mark Howden Director of the Institute for Climate, Energy & Disaster Solutions at The Australian National University

Climate, Community and Connection - Landcare Transforming Australia by Claire O'Rourke

Intergenerational Landcare Story Peter Dalton and Gabrielle Stacey: VIDEO

Landcare Mindfulness: Shelley McCardle

Plenary Speaker: Dr Ian Creswell

On Country with Victor Steffensen: VIDEO

Plenary Speaker: Victor Steffensen, Firesticks Alliance

Closing Speakers Panel: Ella Maesepp and Jayden Gun

There were also panel sessions and stream sessions on: Landcare Farming and Emerging Environmental Markets, Environment and Climate Change, Community Partnerships in Action, Landcare Impact, Urban Landcare and First Nations.

## Wise Waterways Workshop - Training Opportunity

**24th - 28th October, Beechworth**

The Wise Water Ways Workshop offers people the opportunity to gather, discuss and learn from a wide range of Australian and overseas waterways experts, researchers and managers. Many of the workshop speakers present new research findings and developments, and offer their firsthand experience in stream management.

Each year, the Wise Water Ways Committee invites specialist researchers in water quality, macroinvertebrate and fish, as well as practical on ground managers, to engage with participants and present their most recent findings at the five day workshop.

Tickets are \$1265 for the full workshop, including morning teas, lunches, dinners (excluding Wed), and an annual subscription to RBMS, or \$1185 for members of the River Basin Management Society (RBMS). View the full Wise Water Ways Workshop program or register [here](#).

## Arthur Rylah Seminar - Australia's Threatened Species Index, Monday 19th September 1-2pm

This Seminar will feature **Dr Geoff Heard** (University of Queensland) talking about a national index to track broad trends in species in Australia. We will then hear from **Justin Cally**, sharing his research at a more local scale on Koala populations in East Gippsland.

Register at [Eventbrite](#)



**Emu's of North-East Victoria, Mitta 2 Murray Landcare, 27th September 6pm**  
***Current knowledge and their importance from the Traditional Owner's perspective.***

Mitta 2 Murray Landcare Inc will host a presentation on Emus in conjunction with the Duduroa Dhargal Elders and Dr Julia Ryeland. They would like to share their understanding of Emus, their distribution in the region, and their cultural importance to Traditional Owners.

All are welcome to attend for an evening with a difference. Dinner provided: Please note any dietary requirements.

**Venue: Tallangatta Bowling Club**

**DATE: 27<sup>th</sup> September 2022**

**TIME: Dinner 6.00pm – 6.40pm**

**Presentation: 6.40 – 8pm**

**RSVP:**

**Doris Razeng Ph: 0499977471**

**Simon Feillafe Ph: 0438 190 999 Email: [sfeillafe@outlook.com](mailto:sfeillafe@outlook.com)**

Funded by Northeast Victoria Bushfire Biodiversity Response and Recovery.



## Grants and surveys out now

### **Kiewa River Waterway Incentives - EOIs now open, close 30th September 2022**

Are you a landowner or community group in the Lower Kiewa River Catchment seeking to improve environmental outcomes? Expressions of interest have now opened for the Kiewa River Waterway Incentive, funded by the Victorian Government under its #OurCatchmentsOurCommunities program.

The three-year project aims to Improve stock management along waterways, increase native riparian vegetation, and reduce the impacts of pest plants.

This program will target sites in the Lower Kiewa Catchment Area downstream of Gundowring. EOIs close on 30 September 2022.

Download the EOI form as well as information on eligibility and project conditions at the North East CMA website at [Lower Kiewa Catchment Stewardship Project \(necma.vic.gov.au\)](https://necma.vic.gov.au)



### **Parks Victoria Youth Volunteering for Nature Fund – grants now open** **Closing date, 3rd October 2022**

This fund aims to empower young people, aged 18 – 29, all over Victoria to create innovative answers to challenges facing Victoria's natural environment. Submit your idea for projects that **champion environmental volunteering**, have a positive impact on Victorian **environmental, historic and/or Aboriginal cultural heritage values**, encourage more **young people** to volunteer for nature and provide lessons for the future.

Applicants will be awarded up to \$2,000 (individuals) or \$5000 (groups) to help fund your idea. Applications close **3 October 2022**.

For more information and to apply, please visit: <https://www.parks.vic.gov.au/get-into-nature/volunteering/youth-volunteering-for-nature>

### **beeWatch – report the locations of wild beehives (Varroa mite preparedness)**

The Victorian Recreational Beekeepers Association (VRBA) has created a page (beeWatch) for beekeepers and the public to **register information about the locations of wild (feral) and unmanaged hives**. This includes beehives found in bird boxes, trees and knolls, possum boxes, disused outbuildings, chimneys, or wall cavities.

The information collected will be supplied to Agriculture Victoria and the Department of Jobs, Precincts and Regions (DJPR) in case the parasitic Varroa mite (recently detected in New South Wales) reaches Victoria. To report a wild hive in your area, please visit: <https://beewatch.au/form/>

### **Mapping Australian Agriculture Survey - Graeme Hand**

Graeme Hand from Hand for the Land is running a project to survey Australian Agriculture and is seeking participants to complete a survey.



The intent of the Mapping Australia Agriculture project is to map the current state of Australian agriculture and discover/create opportunities. The survey results will inform next possible steps that shift food production to a lower risk, increasingly profitable, and drought resilient model that restores biodiversity.

The survey is confidential and takes about 12-17 minutes to complete. A report will be prepared and published on the results and potential steps.

To find out more and to complete the survey please [click on this link](#)



## Resources

### Agriculture Victoria - The Fast Break latest newsletter

Agriculture Victoria have released their latest edition of The Fast Break providing seasonal climate information for Victoria. The newsletter includes oceanic and atmospheric climate driver activity over the last month and summarises three month model predictions for the Pacific and Indian Oceans, rainfall and temperature for Victoria.

To find out more about upcoming climate predictions for the region and to [subscribe to this newsletter](#) or watch the latest seasonal climate videos: [click here](#).



### Foot-and-mouth disease awareness webinar recording

To find out more about recent biosecurity concerns around foot and mouth disease you can watch a recent recording of the Ag Victoria webinar here: [webinar recording can be accessed online](#). The passcode is **FMD.LSD22!**

Also [Click here](#) to find out more about FMD on Agriculture Victoria website.

### North East CMA - Revegetation video series

The North East Catchment Management Authority (CMA) revegetation video series is now available - see the full playlist at [Bush for Birds Revegetation Series July 2022 - YouTube](#)

The revegetation video series is part of the Bush for Birds project, a landscape-scale project that aims to help landowners create and improve habitat for the critically endangered Regent honeyeater and Swift parrot in north-eastern Victoria.

The series walks through the steps for a successful revegetation project, from planning, site preparation, and planting, to enhancing farm dams to improve biodiversity values in your site.

The video series was developed to inspire and support landholders to start their own revegetation projects. If you have further inquiries or want to discuss revegetation opportunities, please contact the North East CMA.

## Contact Us

To find out more about Kiewa Catchment Landcare Groups please:

[Join our group on Facebook](#)

Join or [renew your membership here](#)

[Subscribe to our newsletter here](#)

**Contact us:**

*Landcare Facilitator:*

Shannon Brennan

Work days: Tuesday, Wednesday, Thursday

Email: [facilitator@kclg.org.au](mailto:facilitator@kclg.org.au)

Phone: 0407 227 814

*Project Officer:*

Charles Daaboul

Work days: Tuesday, Wednesday, Thursday, Friday

Email: [projects@kclg.org.au](mailto:projects@kclg.org.au)

Phone: 0493 268 085